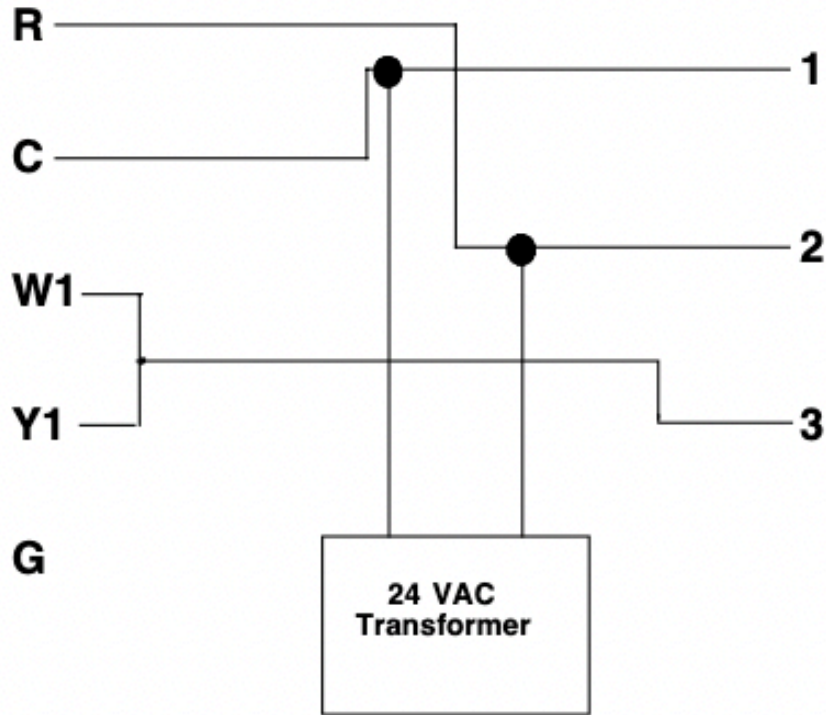


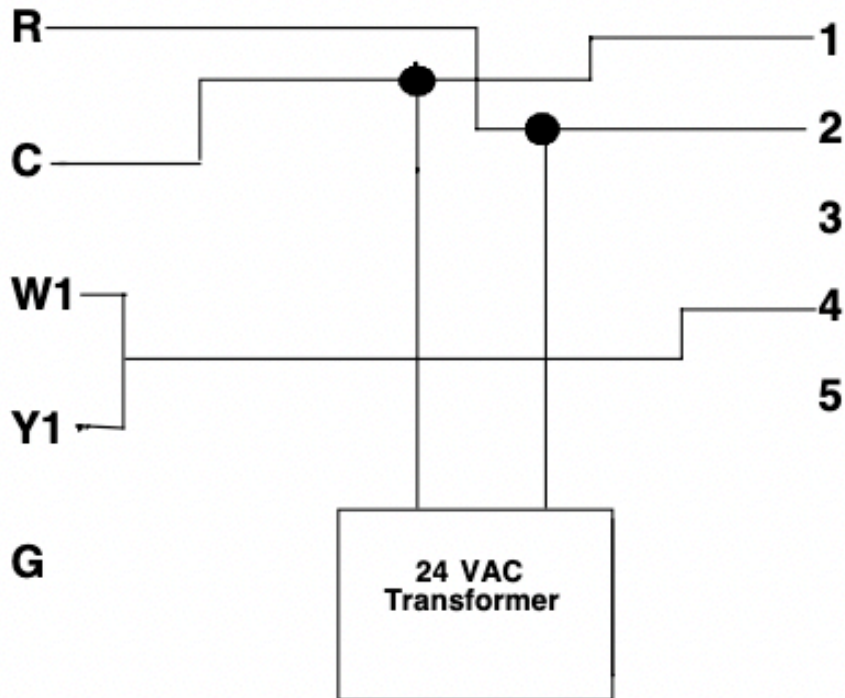
Slave Zone Wiring Diagram

Conventional 1Heat
/ 1 Cool Thermostat
Terminals

SD Damper



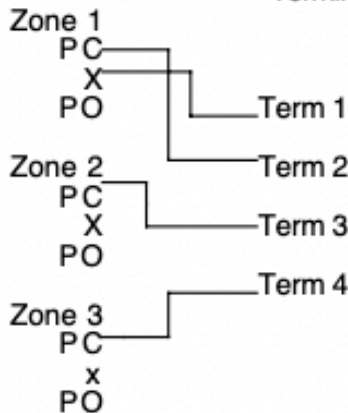
DRD Damper



Wiring Diagram for Control Panels to SD Dampers and Airzone Systems

Airzone System Wiring Diagrams

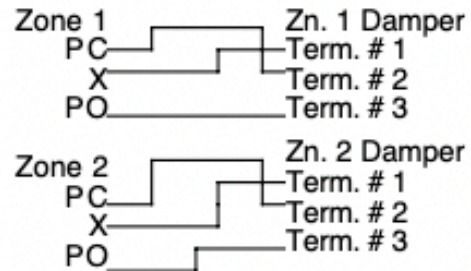
Robert Shaw SZC & SZD Control Panels Airzone/ Flexdamper Terminals



NOTE: You only have to wire Terminal 1 (black wire) to the 1st Zone common (X).

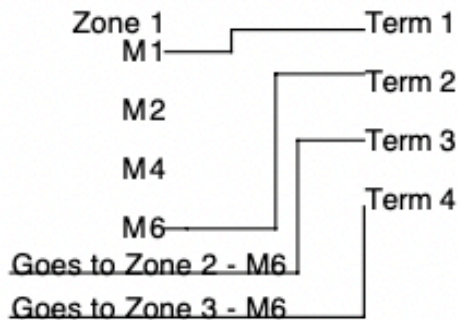
SD Series Damper Wiring Diagrams

Robert Shaw SZC & SZD Control Panels SD Series Dampers

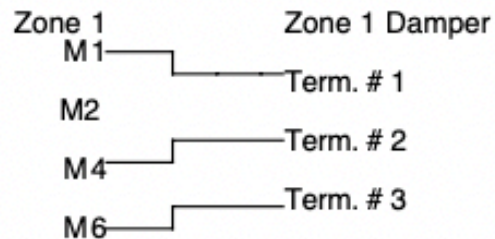


The SD Series' Belimo LMB24 has a dial switch on the face with positions 0 and 1. The factory setting is 1. If moved to 0, terminals #2 and #3 can be switched to work opposite of above. Therefore, the only wire that MUST be correct is Terminal #1 to X (Common).

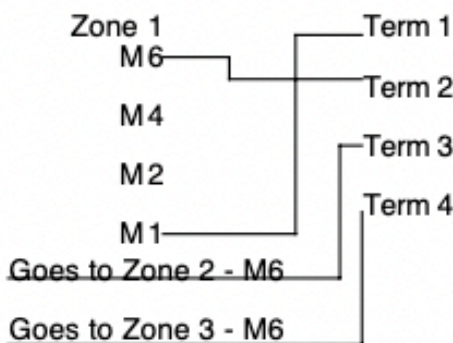
Durozone ED-4 Control Panel Airzone / Flex-damper Terminals



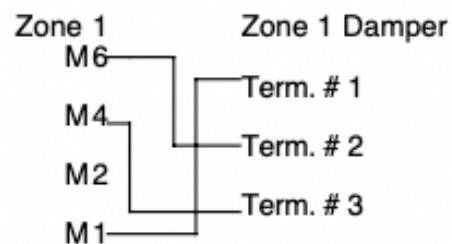
Durozone ED-4 Control Panel SD Series Dampers



EWC Control Panels Airzone / Flex-damper Terminals



EWC Control Panels SD Series Dampers



LMB24-3-T Technical Data Sheet

On/Off, Floating Point, Non-Spring Return, 24 V

Typical Specification

Floating point, on/off control damper actuators shall be electronic direct-coupled type, which require no crank arm and linkage and be capable of direct mounting to a shaft from 1/4" to 5/8". Shafts up to 3/4" diameter can be accommodate with an accessory clamp. Actuators shall have brushless DC motor technology and be protected from overload at all angles of rotation. Actuators shall have reversing switch and manual override on the cover. If required, actuator will be provided with screw terminal strip for electrical connections [LMB(X)24-3-T]. If required, actuators shall be provided with one adjustable SPDT auxiliary switch. Actuators with auxiliary switches must be constructed to meet the requirements for double insulation so an electrical ground is not required to meet agency listings. Run time shall be constant and independent of torque. Actuators shall be cULus listed, have a 5-year warranty, and be manufactured under ISO 9001 International Quality Control Standards. Actuators shall be as manufactured by Belimo.

Wiring Diagrams

- Actuators with appliance cables are numbered.
- Provide overload protection and disconnect as required.
- Actuators may also be powered by 24 VDC.
- Actuators Hot wire must be connected to the control board common. Only connect common to neg. (-) leg of control circuits. Terminal models (-T) have no-feedback.
- Actuators may be connected in parallel if not mechanically linked. Power consumption and input impedance must be observed.
- Actuators are provided with a numbered screw terminal strip instead of a cable.

